

Kolossos Product Presentation



Kolossos Product Information



CTT Kolossos

The computer-supported test and training system for the spine joint motor function.

Strength for the back

Many problems of the musculoskeletal system occur through tense muscles and a weak musculature. This leads to malposition and relieving posture, which deepen the problem. With CTT KOLOSSOS imbalances (even when hidden) and performance deficits of the back musculature and the spinal drives are identified precisely. On the basis of these results an individual, specific training of the thoracic and lumbar spine motor function can be created and thus muscular imbalances and deficits eradicated. Thereby the natural resilience of the spine is restored and improved.

Kolossos Product Information



Diagnosis and treatment of the thoracic and lumbar spine joint motor function:

CTT KOLOSSOS with BioMC Software

- Measurement of the exertion of strength of the the thoracic and lumbar spine joint motor function in the anatomic main planes in an upright sitting position. The measured values (of the chosen effective directions) are stored and displayed as column charts
- Execution of a specific training (treatment) of the sensomotor systems of the thoracic and lumbar spine motor function under isometric working conditions
- Reduction of existing muscular imbalances and performance deficits and restoring and improving the natural resilience of the spine in that segment
- Networking of the device and storage of data for an efficient execution of tests and training

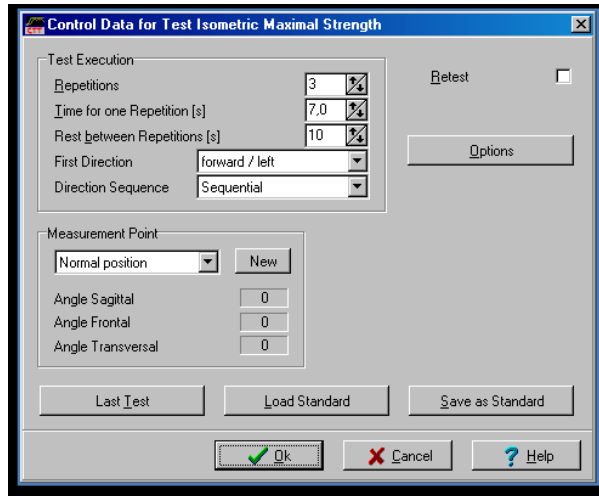
Kolossos Indications



Indications

- Vertebral syndromes with advanced symptoms: prolapsed vertebral disc (including post-operative) and protrusions beyond the acute stage / degenerative changes / cases of spondylolysis and spondylolisthesis / vertebral injury in the context of conservative or post-operative treatment / Recurring vertebral disc complaints with substantially reduced working capacity
- Functional back pain with or without degenerative changes
- Spinal muscular weakness and/or imbalance

BioMC for Kolossos



Application Software BioMC for Kolossos

1. Device Control

- Fast execution of a test of the isometric maximal strength in the sagittal, frontal and transversal plane for diagnosis of imbalances (comparison of opposing directions) and deficits (comparison of measured values and reference values)
- Customizable test of the isometric maximum strength in any plane or direction
- Training for the treatment of imbalances and deficits

2. Operator Management

- Password protected patient data with variable operator rights for different operator groups

BioMC for Kolossos

The screenshot shows a software window titled "Enter Data for a new Patient" with a standard Windows-style title bar (minimize, maximize, close buttons). The window has a tabbed interface with tabs for "Patient", "Address", "Additional Information", and "Treatment". The "Patient" tab is active. The form contains the following fields and controls:

- Patient Number:** An empty text input field.
- Name:** A text input field containing "Mustermann".
- First Name:** A text input field containing "Max".
- Date of Birth:** A date input field containing "12.03.1968".
- Place of Birth:** An empty text input field.
- Sex:** Radio button controls for "Male" (selected) and "Female".
- Height [cm]:** A numeric input field containing "170" with a percentage symbol and a small icon.
- Weight [kg]:** A numeric input field containing "70.00" with a percentage symbol and a small icon.
- Password:** A text input field.
- Password Confirmation:** A text input field.

At the bottom of the window, there are four buttons: "Save", "New Patient", "Close", and "Help".

Application Software BioMC for Kolossos

3. Patient Management

- Definite assignment of diagnosis and therapy data
- Comprehensive management of anthropometric and general data

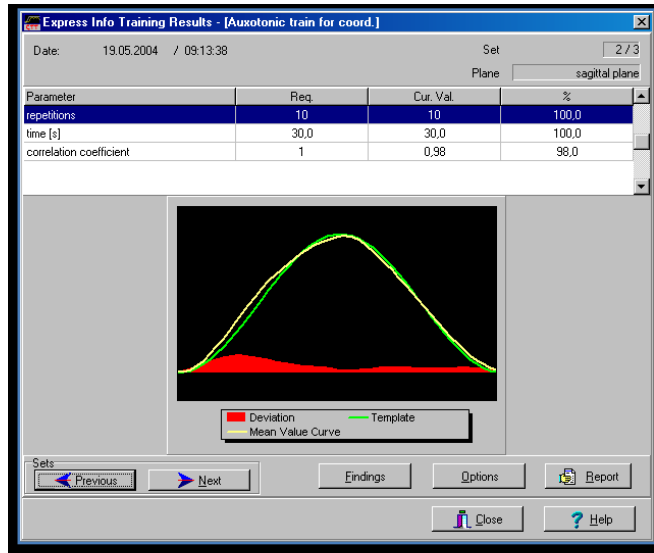
4. Treatment Management

- Management of different treatments including a clear overview for the cost documentation

5. Hardcopy Reports

- Adjustable diagnosis and therapy reports on paper for documentation and archiving

BioMC for Kolossos



Application Software BioMC for Kolossos

6. Pretest/Posttest Comparison

- Therapy success clearly visible (result presentation and documentation)

7. Training progress

- Therapy progress clearly represented

Kolossos Product Specifications



Dimensions and Weight

- Width: 0.80 m
- Depth: 1.50 m
- Height: 1.50 m
- Weight: 150 kg

